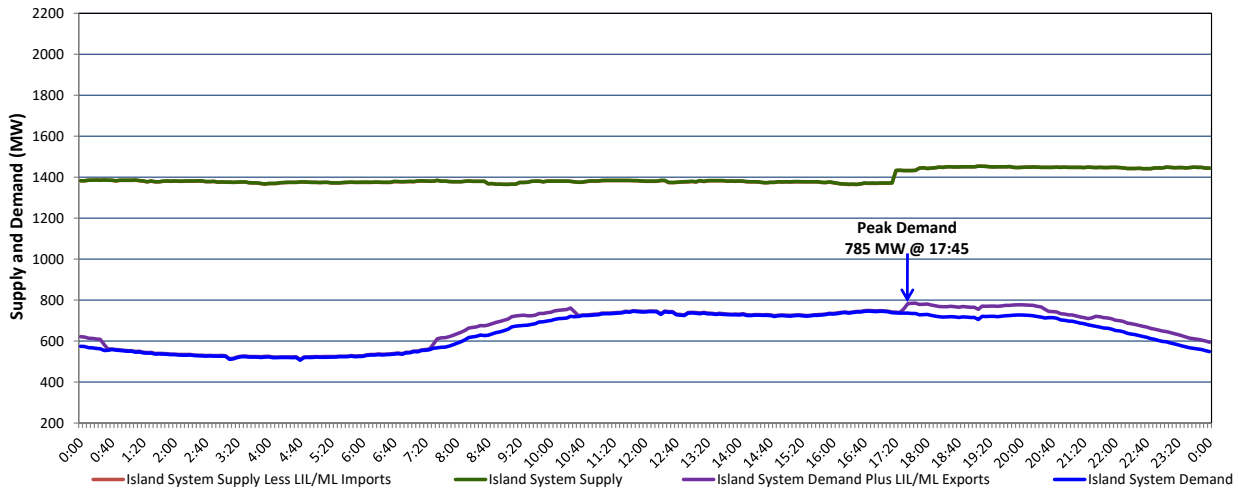


## Newfoundland Labrador Hydro (NLH) Supply and Demand Status Report Filed Monday, September 12, 2022

### Section 1 Island Interconnected System Supply, Demand & Exports Actual 24 Hour System Performance For Sunday, September 11, 2022



#### Supply Notes For September 11, 2022

1,2

- A As of 0800 hours, June 08, 2022, Holyrood Unit 1 unavailable due to planned outage (170 MW).
- B As of 0800 hours, July 31, 2022, Holyrood Unit 2 unavailable due to planned outage 150 MW (170 MW).
- C As of 0803 hours, September 01, 2022, Holyrood Unit 3 available but not operating (150 MW).
- D At 1720 hours, September 11, 2022, Hinds Lake Unit available at 60 MW (75 MW).
- E At 1747 hours, September 11, 2022, Bay d'Espoir Unit 6 available (76.5 MW).
- F At 1748 hours, September 11, 2022, Cat Arm Unit 2 unavailable due to planned outage (67 MW).

### Section 2 Island Interconnected Supply and Demand

Mon, Sep 12, 2022	Island System Outlook <sup>3</sup>		Seven-Day Forecast		Temperature (°C)		Island System Daily Peak Demand (MW)	
					Morning	Evening	Forecast	Adjusted <sup>7</sup>
Available Island System Supply: <sup>5</sup>	1,425	MW	Monday, September 12, 2022		16	14	805	805
NLH Island Generation: <sup>4,8</sup>	1,120	MW	Tuesday, September 13, 2022		14	13	775	775
NLH Island Power Purchases: <sup>6</sup>	110	MW	Wednesday, September 14, 2022		13	14	745	745
Other Island Generation:	195	MW	Thursday, September 15, 2022		16	16	735	735
ML/LIL Imports:	-	MW	Friday, September 16, 2022		14	12	785	785
Current St. John's Temperature & Windchill:	14 °C	N/A	Saturday, September 17, 2022		11	12	755	755
7-Day Island Peak Demand Forecast:	805	MW	Sunday, September 18, 2022		10	10	805	805

#### Supply Notes For September 12, 2022

3

- Notes:
1. Generation outages for running and corrective maintenance are included. These are not unusual for power system operations. They generally do not impact customer supply. The power system operators schedule outages to system equipment whenever possible to coincide with periods when customer demands are low and sufficient supply reserves are available. However, from time to time equipment outages are necessary and reserves may be impacted.
  2. Due to the Island system having no synchronous connections to the larger North American grid, when there is a sudden loss of large generating units there may be a requirement for some customer's load to be interrupted for short periods to bring generation output equal to customer demand. This automatic action of power system protection, referred to as under frequency load shedding (UFLS), is necessary to ensure the integrity and reliability of system equipment. Under frequency events have typically occurred 5 to 8 times per year on the Island Interconnected System and the resultant customer load interruptions are generally less than 30 minutes. With the activation of the Maritime Link frequency controller during the winter of 2018, UFLS events have occurred less frequently.
  3. As of 0800 Hours.
  4. Gross output including station service at Holyrood (24.5 MW) and improved NLH hydraulic output due to water levels (35 MW).
  5. Gross output from all Island sources (including Note 4).
  6. NLH Island Power Purchases include: CBPP Co-Gen, Nalcor Exploits, Rattle Brook, Star Lake, Wind Generation and capacity assistance (when applicable).
  7. Adjusted for curtailable load, market activities and the impact of voltage reduction when applicable.
  8. Due to limitations inherent in the design of combustion turbines, the output of combustion turbines may be reduced in the event that ambient temperatures exceed the threshold.

### Section 3 Island Peak Demand Information Previous Day Actual Peak and Current Day Forecast Peak

Sun, Sep 11, 2022	Actual Island Peak Demand <sup>9</sup>	17:45	785 MW
Mon, Sep 12, 2022	Forecast Island Peak Demand		805 MW

- Notes: 9. Island Demand / LIL / ML Exports (where applicable) is supplied by NLH generation and purchases, plus generation owned and operated by Newfoundland Power and Corner Brook Pulp & Paper (Deer Lake Power, DLP).